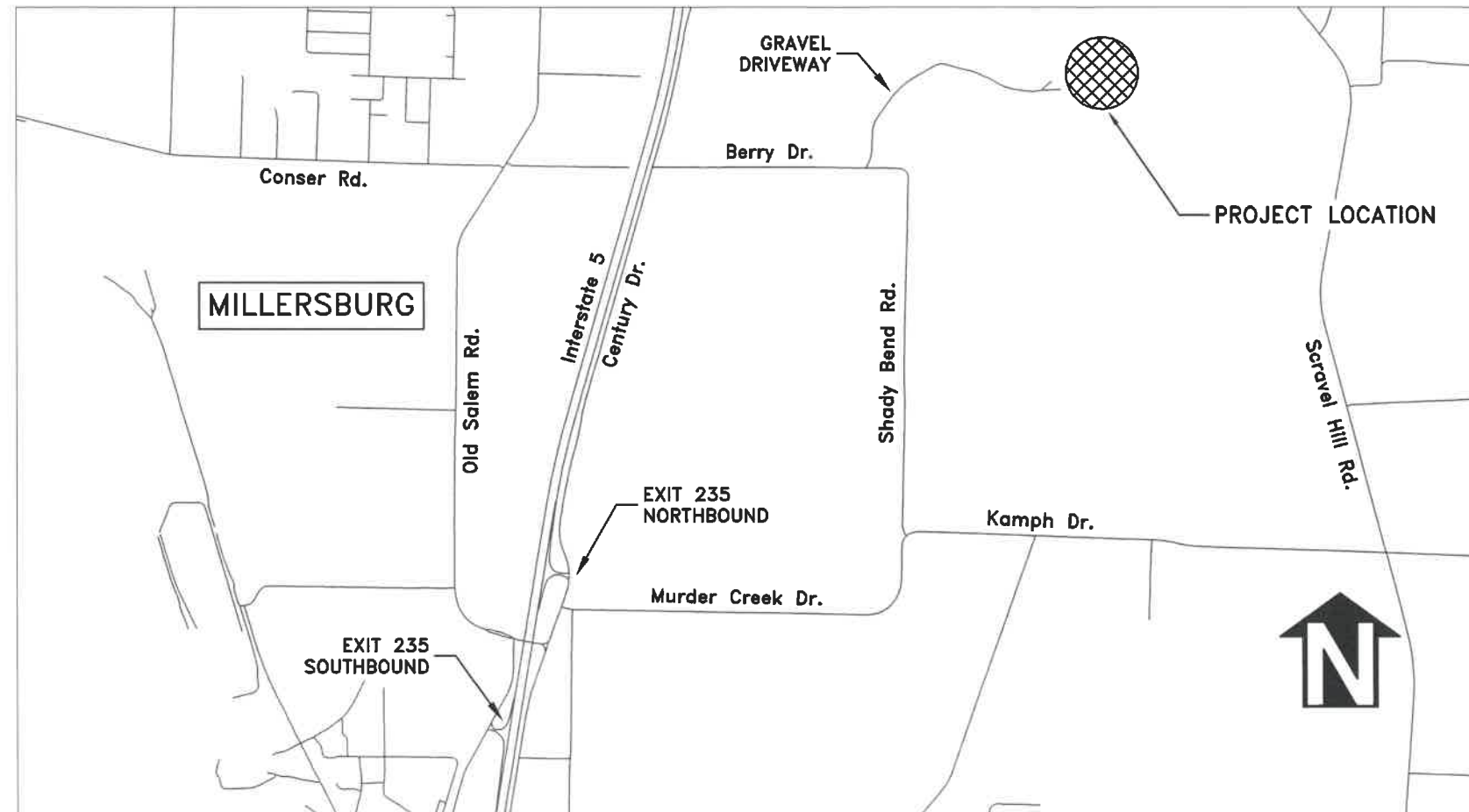


CITY OF ALBANY

WL-20-02, ALBANY-MILLERSBURG INFLUENT VALVE AND FLOW METER REPLACEMENT

SHEET INDEX

- SHEET NO. 1, COVER & GENERAL NOTES
- SHEET NO. 2, WATER TREATMENT PLANT LAYOUT
- SHEET NO. 3, FLOW METER INSTALLATION
- SHEET NO. 4, INFLUENT VALVE REPLACEMENT
- SHEET NO. 5, RESERVOIR CLEANING PLAN
- SHEET NO. 6, RESERVOIR DETAILS



Vicinity Map
Not to Scale

GENERAL NOTES

1. ALL CONSTRUCTION SHALL CONFORM TO THE CITY OF ALBANY STANDARD CONSTRUCTION SPECIFICATIONS AND ASSOCIATED STANDARD DRAWINGS. THE CURRENT VERSION OF THE CITY OF ALBANY STANDARD CONSTRUCTION SPECIFICATIONS CAN BE FOUND ON THE CITY'S WEBSITE AT WWW.CITYOFALBANY.NET.
2. UTILITIES SHOWN ARE FOR REFERENCE ONLY. FOR A FIELD LOCATE, CALL THE UTILITIES NOTIFICATIONS CENTER AT 1-800-332-2344.
3. OPERATING ACCESS FOR CITY MAINTENANCE PERSONNEL TO EXISTING AND NEW WATER VALVES AND MANHOLES SHALL BE CONTINUOUSLY MAINTAINED BY THE CONTRACTOR DURING ALL CONSTRUCTION ACTIVITIES.
4. CONTRACTOR SHALL VERIFY ALL EXISTING PIPE ELEVATIONS, PIPE DIAMETERS, AND PIPE MATERIALS AT CONNECTION AND ABANDONMENT LOCATIONS PRIOR TO CONSTRUCTION. ANY DISCREPANCIES SHALL BE REPORTED TO ENGINEER PRIOR TO BEGINNING WORK.
5. ATTENTION: OREGON LAW REQUIRES YOU TO FOLLOW RULES ADOPTED BY THE OREGON UTILITY NOTIFICATION CENTER. THOSE RULES ARE SET FORTH IN OAR 952-001-0010 THROUGH OAR 952-001-0090. YOU MAY OBTAIN COPIES OF THE RULES BY CALLING THE CENTER. (NOTE: THE TELEPHONE NUMBER FOR THE OREGON UTILITY NOTIFICATION CENTER IS (503) 232-1987).
6. CONTRACTOR SHALL BE RESPONSIBLE FOR PROPER INSTALLATION AND MAINTENANCE OF ALL EROSION PREVENTION SEDIMENT CONTROL (EPSC) MEASURES IN ACCORDANCE WITH LOCAL, STATE, AND FEDERAL REGULATIONS UNTIL ALL CONSTRUCTION IS COMPLETED AND APPROVED BY THE CITY OF ALBANY, AND VEGETATION/LANDSCAPING IS ESTABLISHED. FOR GUIDANCE, REFER TO THE CITY OF ALBANY EPSC MANUAL WHICH CAN BE FOUND AT www.cityofalbany.net.

DESIGNED: C. CERKLEWSKI
 DRAWN: C. CERKLEWSKI
 CHECKED: S. BELCASTRO
 DATE: 1/6/2020

REVISIONS	
NO.	BY:

PUBLIC WORKS DEPARTMENT
ENGINEERING SERVICES



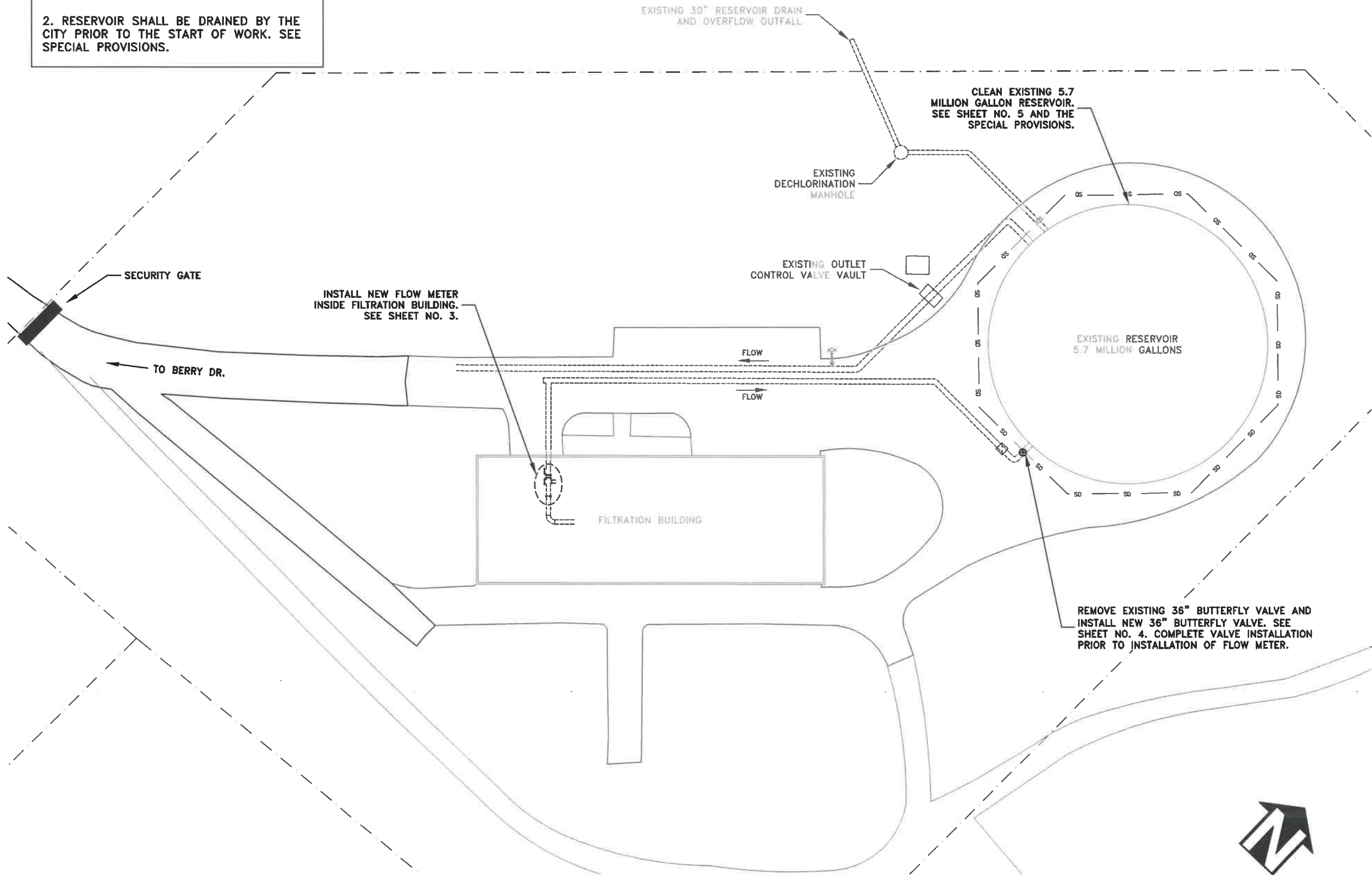
WL-20-02, ALBANY-MILLERSBURG INFLUENT VALVE AND FLOW METER REPLACEMENT



EXPIRATION DATE: 12/31/2021

SHEET NO. 1 OF 6
 PROJECT NO: WL-20-02
 FILE: FILENAME.DWG

NOTES:
 1. THIS PROJECT IS LOCATED WITHIN A SECURE FACILITY. COORDINATE WITH THE ENGINEER FOR ACCESS REQUIREMENTS.
 2. RESERVOIR SHALL BE DRAINED BY THE CITY PRIOR TO THE START OF WORK. SEE SPECIAL PROVISIONS.



DESIGNED: C. CERKLEWSKI	REVISIONS	BY:
DRAWN: C. CERKLEWSKI	NO:	---
CHECKED: S. BELCASTRO	DATE:	---
DATE: 1/6/2020		

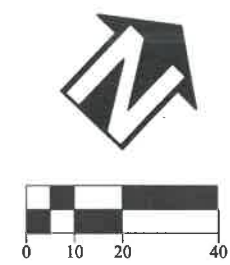
**PUBLIC WORKS DEPARTMENT
ENGINEERING SERVICES**

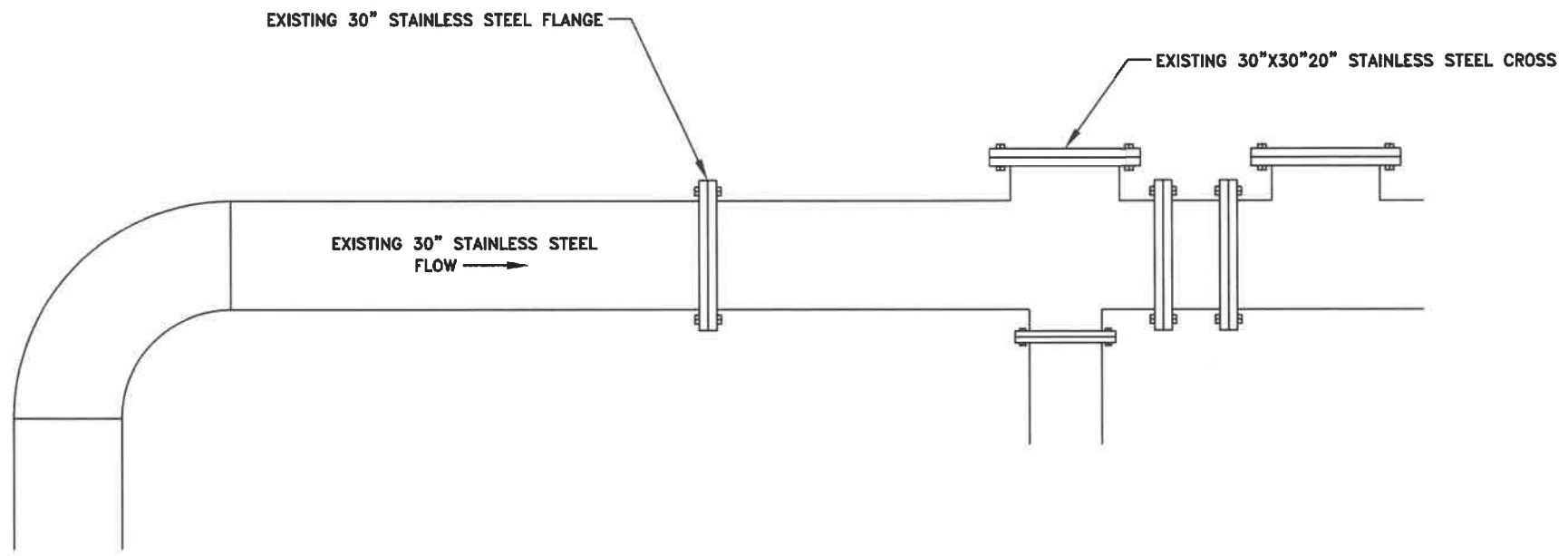
**WL-20-02, ALBANY-MILLERSBURG INFLUENT VALVE AND FLOW METER REPLACEMENT
WATER TREATMENT PLANT LAYOUT**



REGISTERED PROFESSIONAL
ENGINEER
56,471PE
Christopher L. Cerkowski
OREGON
JULY 9, 2002
CHRISTOPHER L. CERKLEWSKI

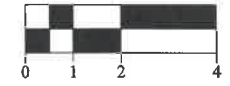
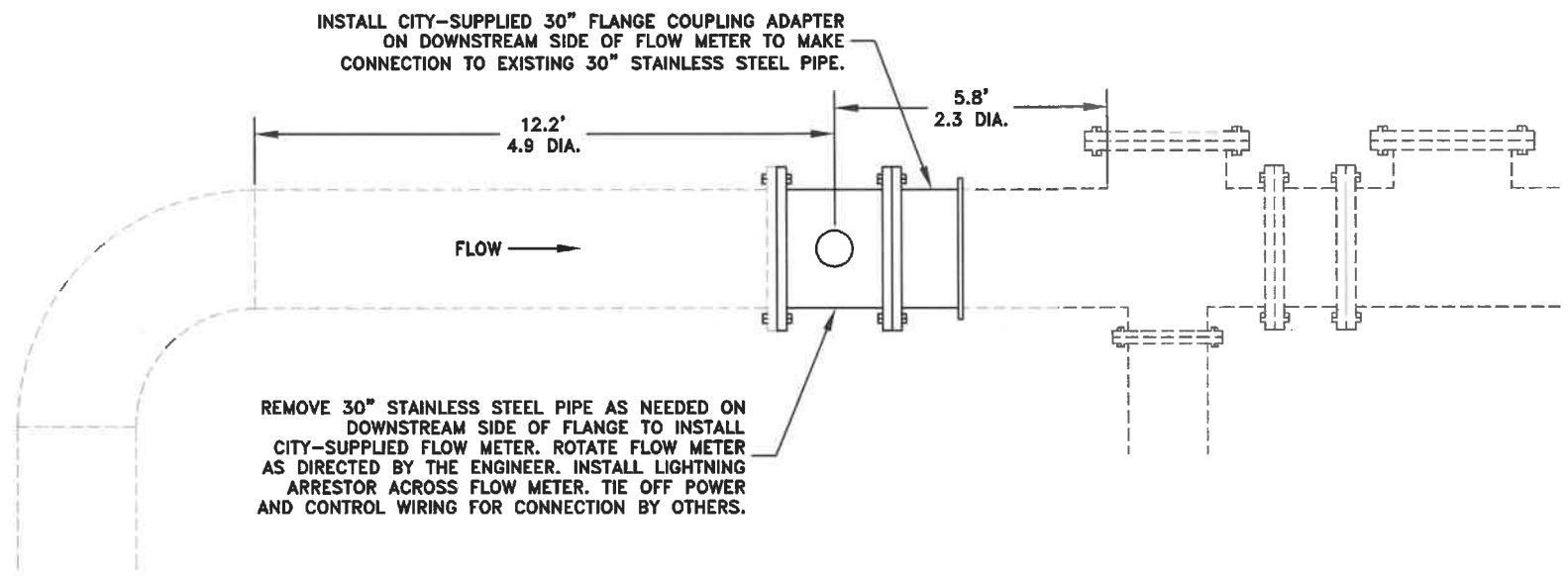
EXPIRATION DATE: 12/31/2021
 SHEET NO. 2 OF 6
 PROJECT NO: WL-20-02
 FILE: BASE.DWG





**EXISTING FILTRATION BUILDING PIPING
PLAN VIEW**

NOTE: EXISTING 30" STAINLESS STEEL PIPING IS APPROXIMATELY 10' FROM FINISHED FLOOR ELEVATION




REMOVE 30" STAINLESS STEEL PIPE AS NEEDED ON DOWNSTREAM SIDE OF FLANGE TO INSTALL CITY-SUPPLIED FLOW METER. ROTATE FLOW METER AS DIRECTED BY THE ENGINEER. INSTALL LIGHTNING ARRESTOR ACROSS FLOW METER. TIE OFF POWER AND CONTROL WIRING FOR CONNECTION BY OTHERS.

**NEW FLOW METER INSTALLATION
PLAN VIEW**

NOTE: DISINFECT ALL COMPONENTS PRIOR TO INSTALLATION PER THE STANDARD CONSTRUCTION SPECIFICATIONS

DESIGNED: C. CERKLEWSKI	REVISIONS
DRAWN: C. CERKLEWSKI	NO:
CHECKED: S. BELCASTRO	BY:
DATE: 1/6/2020	DATE:

**PUBLIC WORKS DEPARTMENT
ENGINEERING SERVICES**

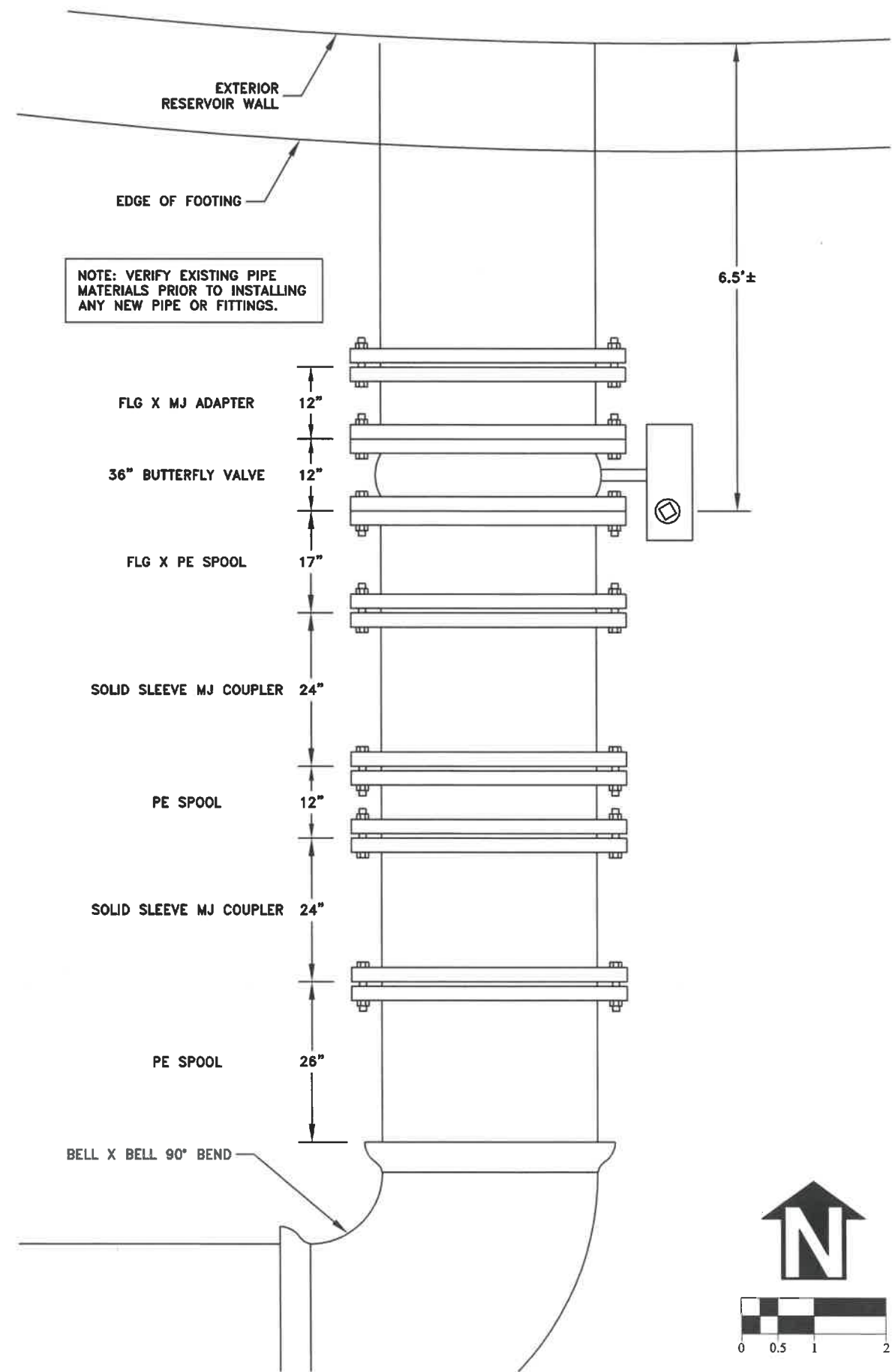


**WL-20-02, ALBANY-MILLERSBURG INFLUENT VALVE AND FLOW METER REPLACEMENT
FLOW METER INSTALLATION**

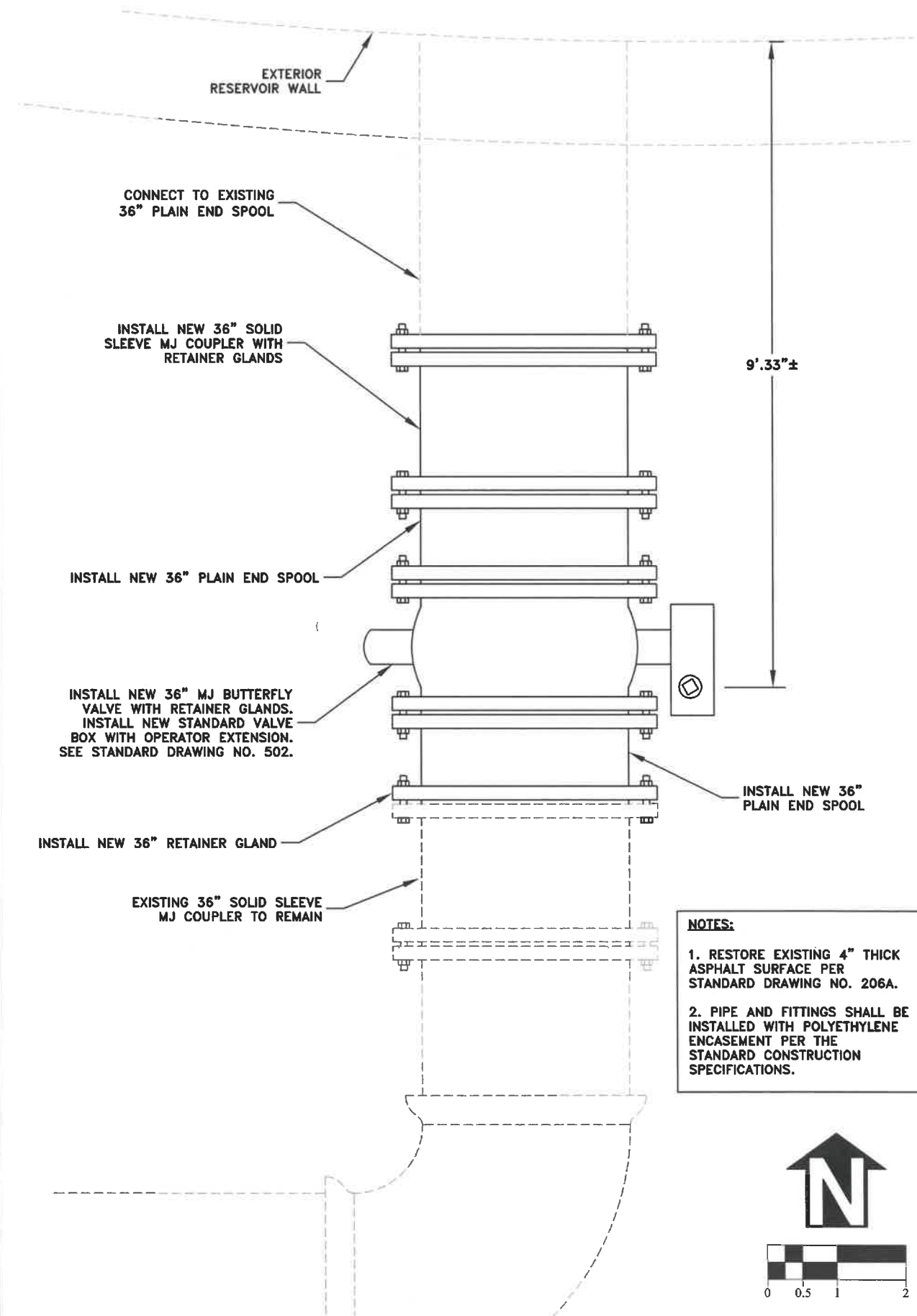
**REGISTERED PROFESSIONAL
ENGINEER
56,471PE**

Christopher L. Cerkowski
CHRISTOPHER L. CERKLEWSKI
OREGON
JULY 9, 2002

EXISTING 36" BUTTERFLY VALVE AND PIPING




NEW 36" BUTTERFLY VALVE AND PIPING



NOTES:
 1. RESTORE EXISTING 4" THICK ASPHALT SURFACE PER STANDARD DRAWING NO. 206A.
 2. PIPE AND FITTINGS SHALL BE INSTALLED WITH POLYETHYLENE ENCASEMENT PER THE STANDARD CONSTRUCTION SPECIFICATIONS.

DESIGNED: C. CERKLEWSKI	REVISIONS	BY:
DRAWN: C. CERKLEWSKI	NO:	
CHECKED: S. BELCASTRO	DATE:	
DATE: 1/6/2020		

**PUBLIC WORKS DEPARTMENT
ENGINEERING SERVICES**

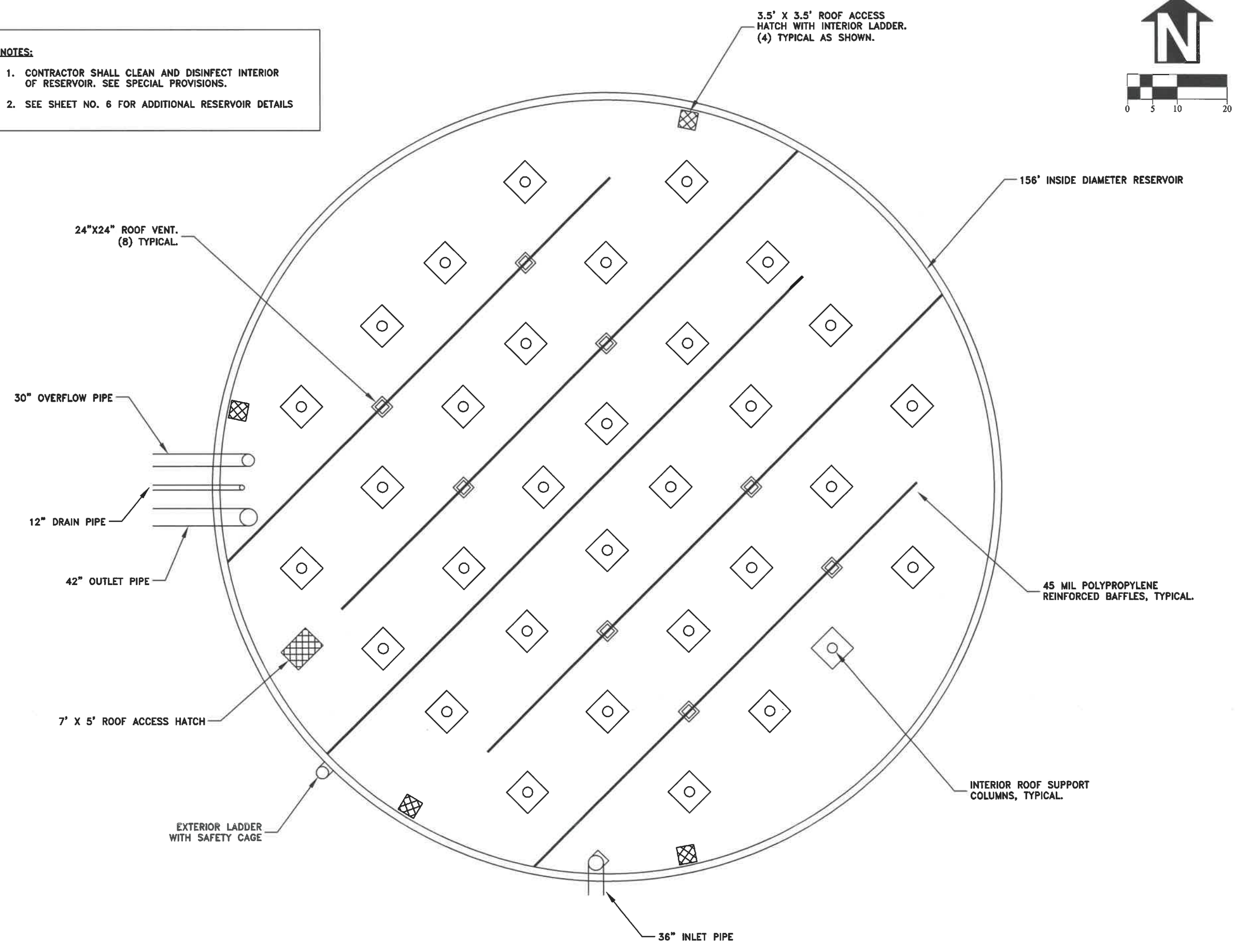
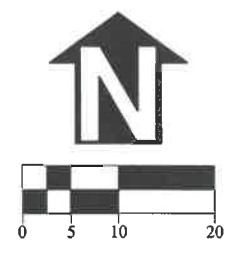


**WL-20-02, ALBANY-MILLERSBURG INFLUENT VALVE AND FLOW METER REPLACEMENT
INFLUENT VALVE REPLACEMENT**

REGISTERED PROFESSIONAL ENGINEER
 56,471PE
Christopher L. Cerkowski
 OREGON
 JULY 9, 2002
CHRISTOPHER L. CERKLEWSKI

NOTES:

1. CONTRACTOR SHALL CLEAN AND DISINFECT INTERIOR OF RESERVOIR. SEE SPECIAL PROVISIONS.
2. SEE SHEET NO. 6 FOR ADDITIONAL RESERVOIR DETAILS



DESIGNED: C. CERKLEWSKI	REVISIONS
DRAWN: C. CERKLEWSKI	NO: ---
CHECKED: S. BELCASTRO	BY: ---
DATE: 1/6/2020	DATE: ---

**PUBLIC WORKS DEPARTMENT
ENGINEERING SERVICES**

**WL-20-02, ALBANY-MILLERSBURG INFLUENT VALVE AND FLOW METER REPLACEMENT
RESERVOIR CLEANING PLAN**



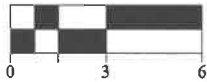
REGISTERED PROFESSIONAL
ENGINEER
56,471PE
Christopher L. Cerkowski
OREGON
JULY 9, 2002
CHRISTOPHER L. CERKLEWSKI

EXPIRATION DATE: 12/31/2021

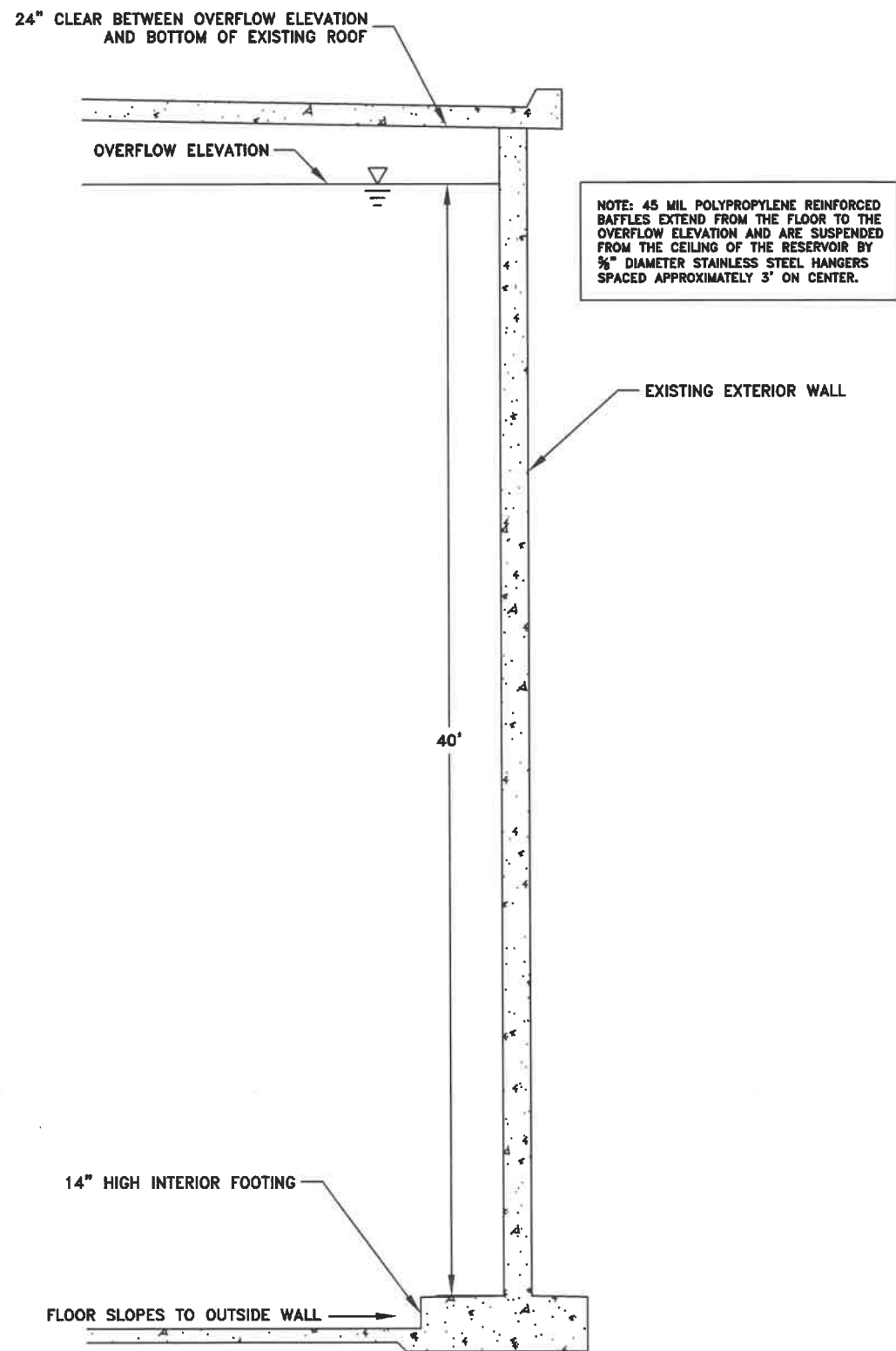
SHEET NO. 5 OF 6

PROJECT NO: WL-20-02

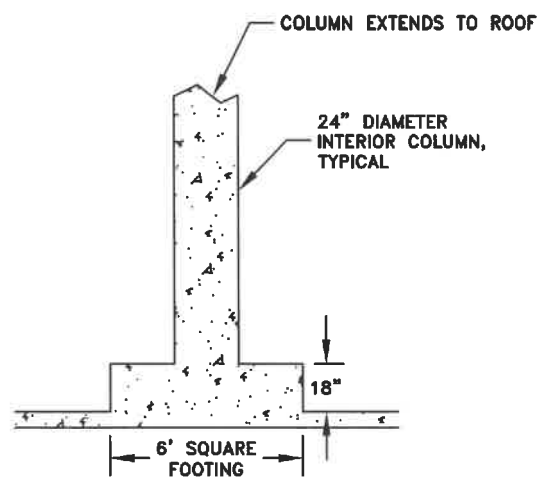
FILE: BASE.DWG



EXISTING RESERVOIR EXTERIOR WALL CROSS SECTION



EXISTING RESERVOIR INTERIOR FOOTING CROSS SECTION



DESIGNED: C. CERKLEWSKI	REVISIONS
DRAWN: C. CERKLEWSKI	NO: ---
CHECKED: S. BELCASTRO	BY: ---
DATE: 1/6/2020	DATE: ---

**PUBLIC WORKS DEPARTMENT
ENGINEERING SERVICES**



**WL-20-02, ALBANY-MILLERSBURG INFLUENT VALVE AND FLOW METER REPLACEMENT
RESERVOIR DETAILS**



EXPIRATION DATE: 12/31/2021

SHEET NO. 6 OF 6

PROJECT NO: WL-20-02

FILE: BASE.DWG